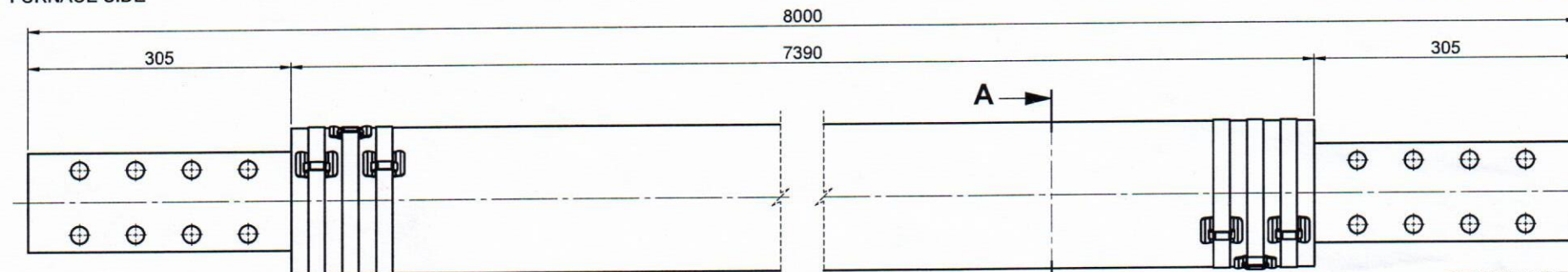


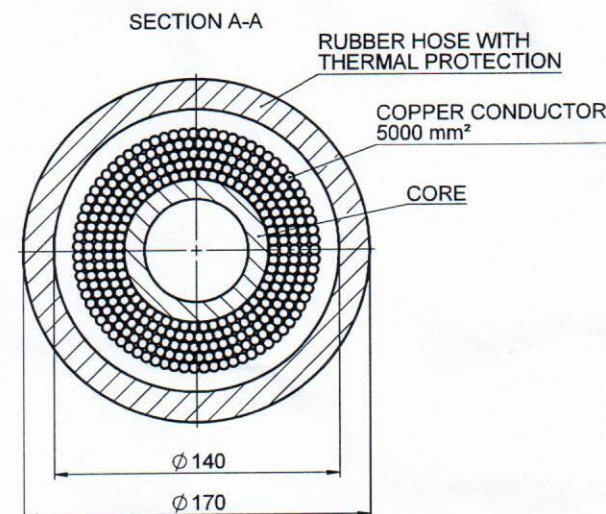
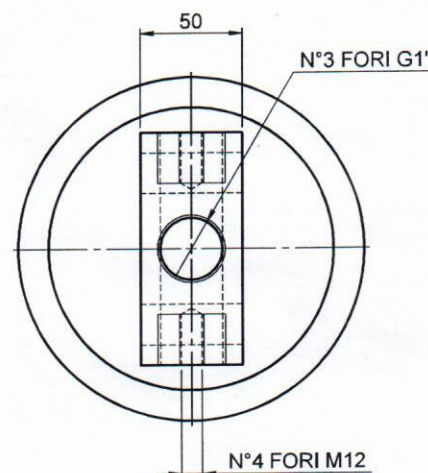
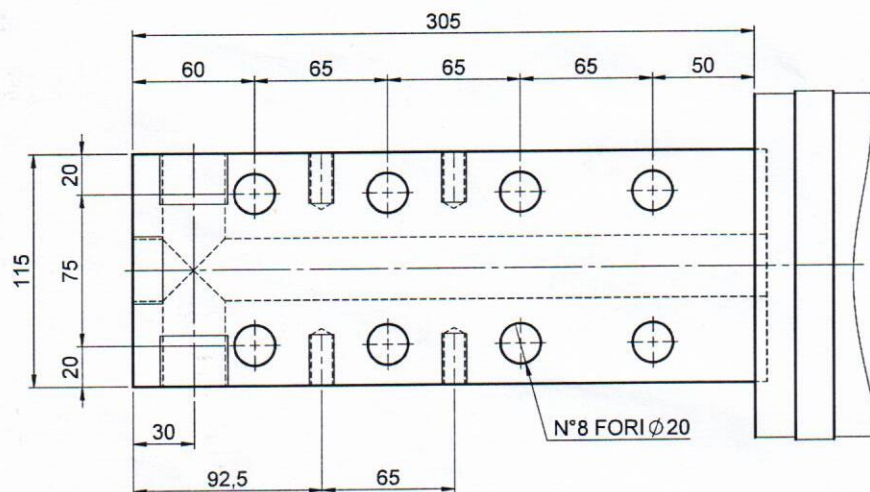
LATO FORNO
FURNACE SIDE

LATO TRASFORMATORE
TRANSFORMER SIDE



TERMINALE FISSO
FIXED JOINT

TERMINALE FISSO
FIXED JOINT



DATI TECNICI / TECHNICAL DATA

Sezione cavo / Copper square	5000	mm ²
Pressione di utilizzo / Water working pressure	4-6	bar
Pressione di collaudo / Testing pressure	10	bar
Minimo raggio di curvatura / Min. bending radius	700	mm
Corrente nominale / Nominal current	22,5	kA
Corrente max. / Max current	25	kA

REV.		DESCRIPTION		DRAWN		DATE	
REVISIONS							
<p>High-current leader</p>				TITLE			
				ITEM			
CAVO EPS S.5000 L=8000							
MATERIAL				WEIGHT [kg]	DRAWN BY	DATE	APPROVED BY
				526.07	MASELLA	26/05/2014	A.A.
Tolerances for linear and angular dimensions without indications of specific tolerance in accordance with: UNI EN 22768-1:1996 TOLERANCE CLASS : ISO 2768 - m				IT'S FORBIDDEN EVERY REPRODUCTION NOT EXPRESSING AUTHORIZED		CODE	
SHEET		SCALE		A3		REV.	
1/1		1:2.5		420/297		8.0700.0008 00	